



Installation instructions
Valve Control 2
Ford Focus RS MK3

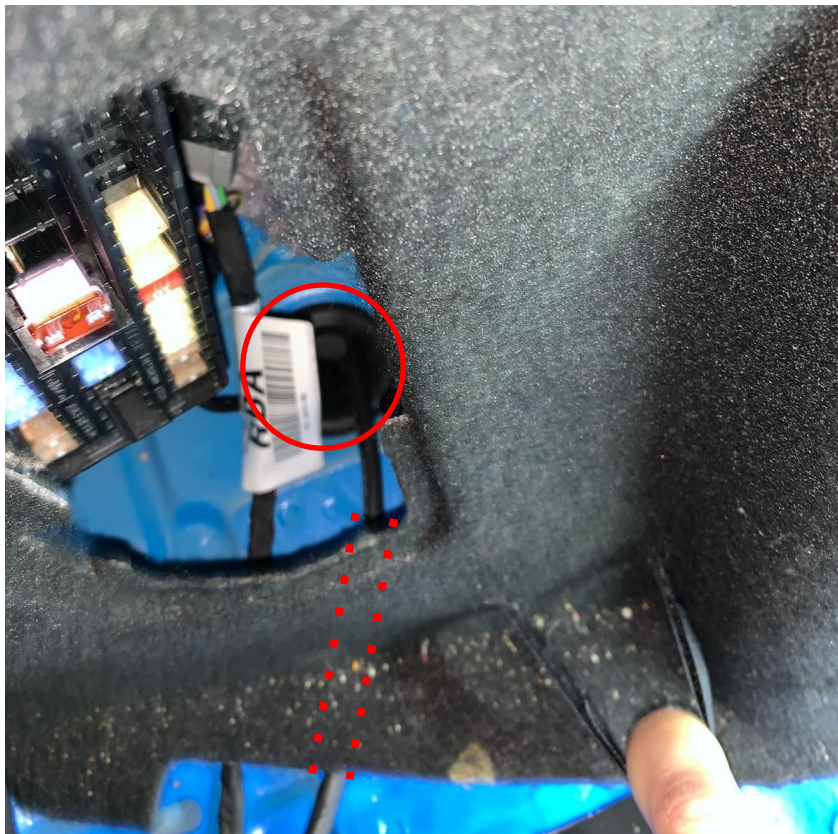
First remove the trunk floor and loosen the screw of the subwoofer. Then disconnect the plug from the subwoofer and remove the subwoofer and the foam parts from the trunk:



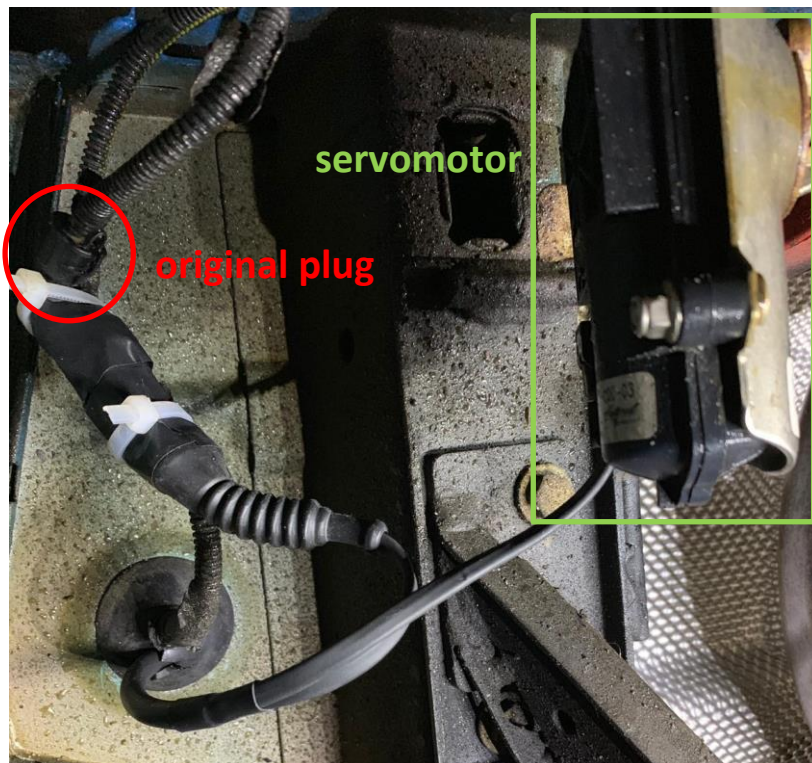
Remove the maintenance flap in the left side carpet by carefully prying:



Expand the grommet with a large screwdriver and then first put the cables from below behind the side trim and then down through the grommet:



Disconnect the original plug of the servomotor and connect it with the matching connector of the control system. Then connect the second connector of the control system with the servomotor:



Now re-install all parts in reverse order and put the control system in position inside the foam part:



Then test the control system with running engine.



Owner: Christian Müller

Vorstadt 15

94577 Winzer

Germany

Telephone: +49 (0) 9901 200981

Fax: +49 (0) 9901 200983

www.special-exhaust.de

info@special-exhaust.de